



# SALBELINA

R E S I D E N C Y

Project by Kapil Borker

SALBELINA

Rera No.: PRGO05231953

# SALBELINA

R E S I D E N C Y

Project by Kapil Borker



## AMENITIES



**CCTV  
Surveillance**



**Gated  
Complex**



**Vastu  
Compliant**



**Earthquake  
Resistant**



**DTH Connection  
Provision**

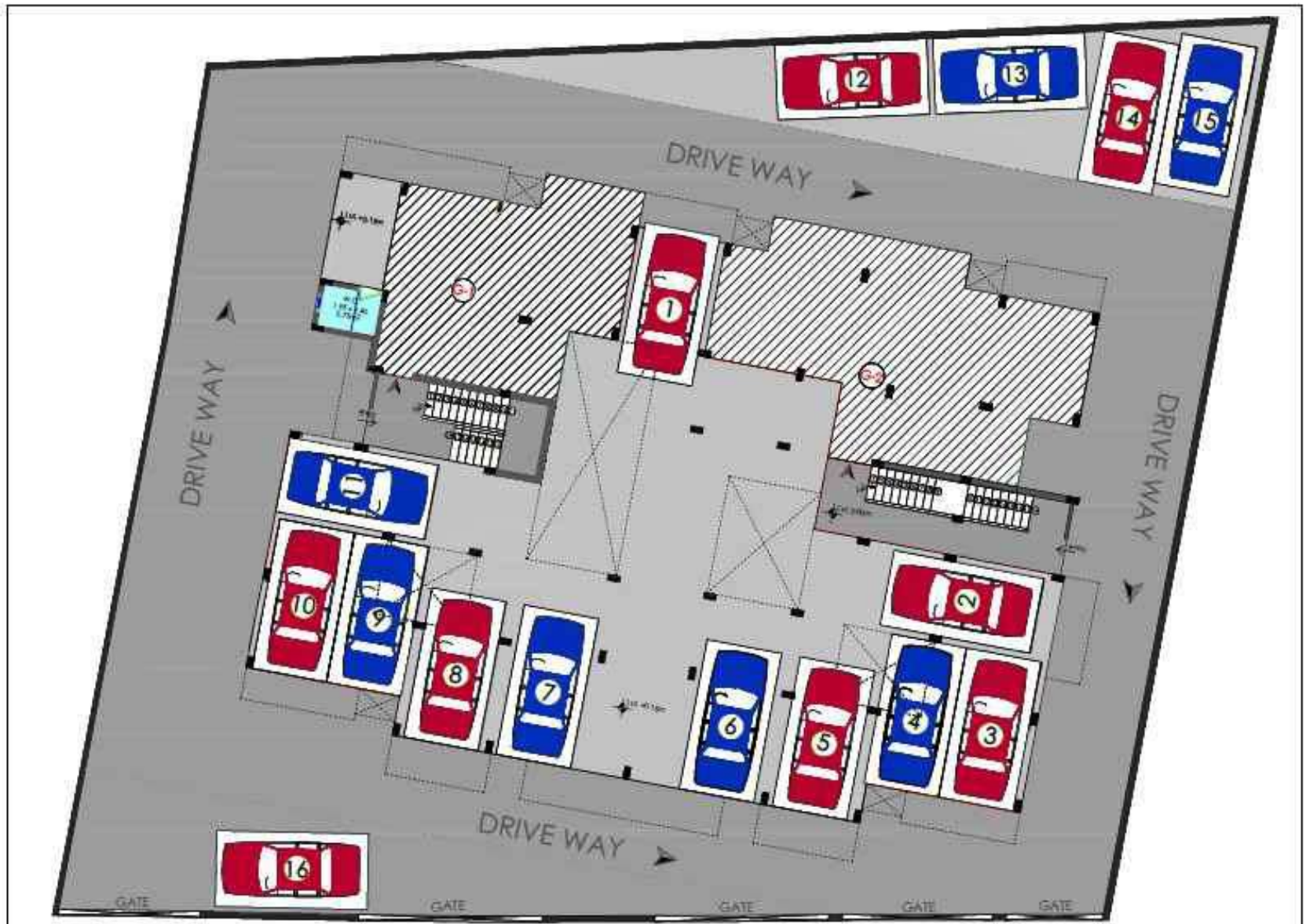


**Connection  
Provision**



**Inverter  
Provision**

# FLOOR PLAN



SALBELINA RESIDENCY  
PARKING LAYOUT



# FLOOR PLAN



SALBELINA RESIDENCY  
GROUND FLOOR PLAN



# FLOOR PLAN



SALBELINA RESIDENCY

FIRST FLOOR PLAN

# FLOOR PLAN



SALBELINA RESIDENCY  
SECOND FLOOR PLAN

 **BORKER**  
CONSTRUCTIONS

## **FLOORING**

Vitrified Floorings in all rooms

## **KITCHEN**

Granite platform with stainless steel sink and glazed tiles

## **BATHROOM**

Glazed tiles & branded sanitary ware

## **DOORS & WINDOWS**

Panelled main door & anodized aluminium wondows

## **PAINTS & FINISHES**

Internal - Premium Emulsion

External - Weather shield paint by Asian or Berger

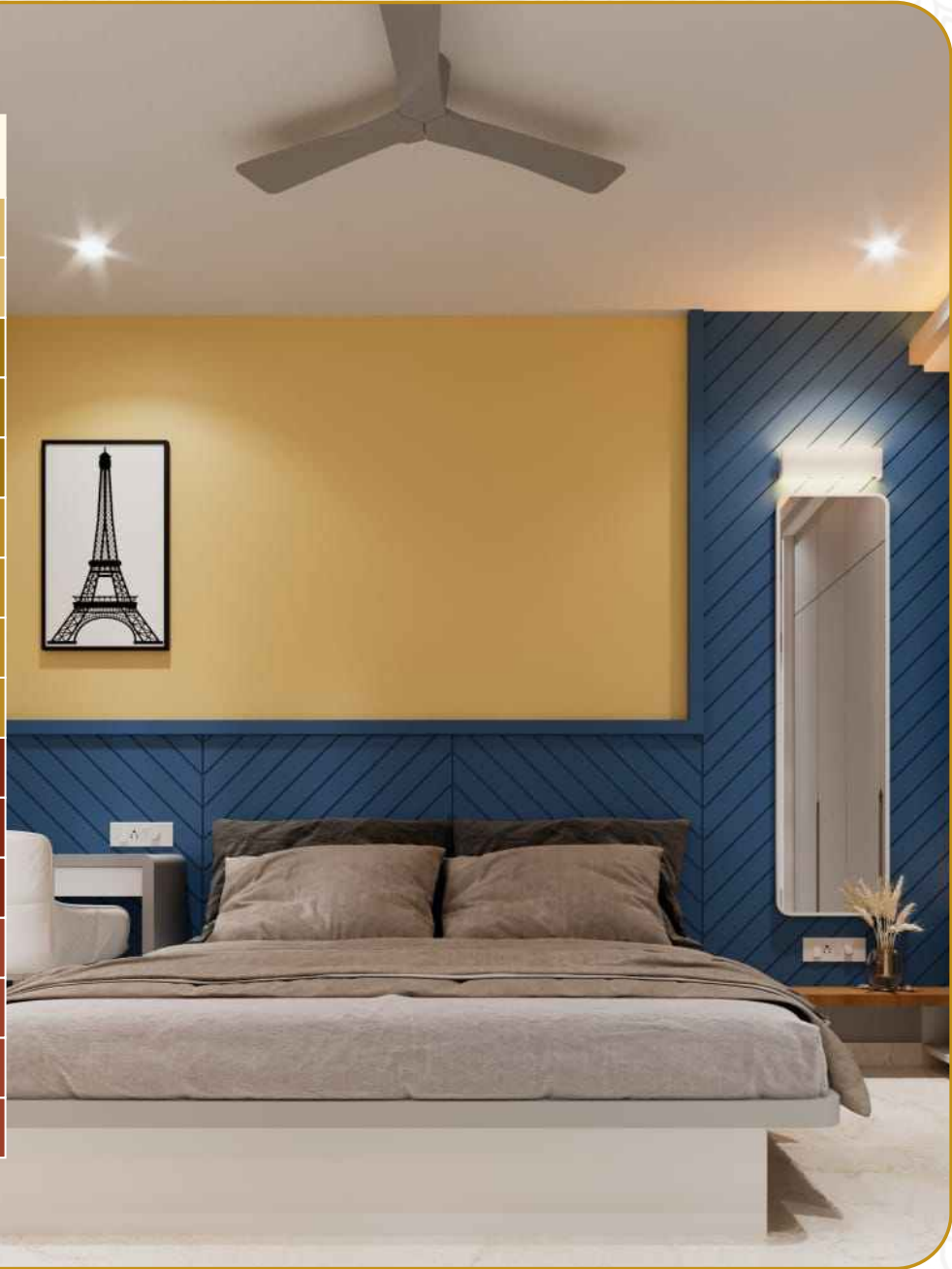
## **ELECTRICALS**

Concealed copper wiring with branded switches

## **PLUMBING**

Concealed Plumbing in all Toilets & Kitchen

FLATS	AREA
G-1 (1-BHK)	59.63
G-2 (2-BHK)	80.13
F-1 (2-BHK)	75.37
F-2 (1-BHK)	62.30
F-3 (1-BHK)	62.78
F-4 (1-BHK)	60.39
F-5 (1-BHK)	68.17
F-6 (1-BHK)	66.99
F-7 (1-BHK)	57.37
S-1 (2-BHK)	81.26
S-2 (1-BHK)	62.30
S-3 (1-BHK)	62.78
S-4 (1-BHK)	60.98
S-5 (1-BHK)	64.84
S-6 (1-BHK)	64.55
S-7 (1-BHK)	61.28







Follow Us  


**Note :** All the images and colours used in this 3D images are for visualisation purpose, actual building colour and designs may change or vary if required.

# SALBELINA

## R E S I D E N C Y

Project by Kapil Borker

 Karai, Shiroda,  
Ponda - Goa

 +91 9881 395 085  
+91 9404 455 455

 [info@borkerconstructions.com](mailto:info@borkerconstructions.com)

 [www.borkerconstructions.com](http://www.borkerconstructions.com)

RCC Consultants & Designing  
**M/s VASHISTHA & ASSOCIATES**

 98237 87286

Legal Advisor

**ADV SATISH PILGAONKER**

 98221 55647